

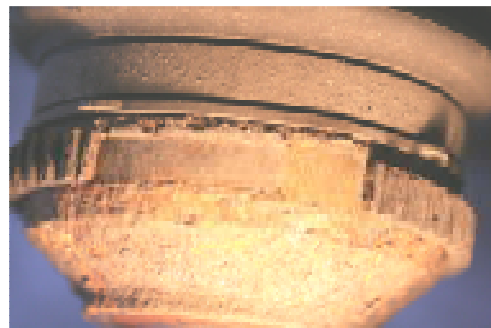
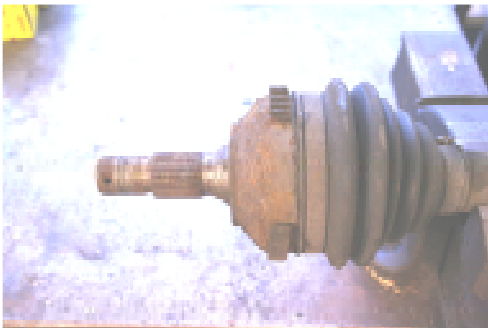
## CASE HISTORY :-Peugeot 206 GTI



**VEHICLE FAULTS:-** ABS warning light on

**TESTING:-** Reading the fault memory revealed a stored fault for the o\s wheel speed signal . The fault was cleared and the vehicle road tested the ABS light came back on and re-reading gave the same reoccurring fault .

Inspection of the vehicle sensor revealed it to be ok but the reluctor ring on the outside of the drive shaft had corroded through and broken of (see picture) .



### CONCLUSION :-

This illustrates that you cannot rely purely on fault codes and that fault codes alone can be miss leading all diagnoses must nbe backed up with scope testing and visual inspection.

